

TONALITY CHEAT SHEET

MAJOR

Tonal Sequence

Musical notation for the Major Tonal Sequence in treble clef, 4/4 time. The notes are: So (G4), La (A4), So (G4), Fa (F4), Mi (E4), Re (D4), Ti (C4), Do (B3). The notes are written on a single staff with a treble clef and a key signature of one sharp (F#).

Resting Tone

Musical notation for the Major Resting Tone in treble clef, 4/4 time. The note is: Do (B3). The note is written on a single staff with a treble clef and a key signature of one sharp (F#).

Essential Harmonic Functions

I (Tonic)

Musical notation for the Major I (Tonic) chord in treble clef, 4/4 time. The notes are: Do (B3), Mi (E4), So (G4). The notes are written on a single staff with a treble clef and a key signature of one sharp (F#).

V (Dominant)

Musical notation for the Major V (Dominant) chord in treble clef, 4/4 time. The notes are: So (G4), Fa (F4), Re (D4), Ti (C4). The notes are written on a single staff with a treble clef and a key signature of one sharp (F#).

IV (Subdominant)

Musical notation for the Major IV (Subdominant) chord in treble clef, 4/4 time. The notes are: Fa (F4), La (A4), Do (B3). The notes are written on a single staff with a treble clef and a key signature of one sharp (F#).

Simple Tune

Musical notation for the Major Simple Tune in treble clef, 4/4 time. The notes are: I (Do), V (So), I (Do), V (So), I (Do). The notes are written on a single staff with a treble clef and a key signature of one sharp (F#).

MINOR

Tonal Sequence

Musical notation for the Minor Tonal Sequence in treble clef, 4/4 time. The notes are: Mi (E4), Fa (F4), Mi (E4), Re (D4), Do (C4), Ti (B3), Si (A3), La (G3). The notes are written on a single staff with a treble clef and a key signature of two flats (Bb, Eb).

Resting Tone

Musical notation for the Minor Resting Tone in treble clef, 4/4 time. The note is: La (G3). The note is written on a single staff with a treble clef and a key signature of two flats (Bb, Eb).

Essential Harmonic Functions

i (Tonic)

Musical notation for the Minor i (Tonic) chord in treble clef, 4/4 time. The notes are: La (G3), Do (C4), Mi (E4). The notes are written on a single staff with a treble clef and a key signature of two flats (Bb, Eb).

V (Dominant)

Musical notation for the Minor V (Dominant) chord in treble clef, 4/4 time. The notes are: Mi (E4), Re (D4), Ti (B3), Si (A3). The notes are written on a single staff with a treble clef and a key signature of two flats (Bb, Eb).

iv (Subdominant)

Musical notation for the Minor iv (Subdominant) chord in treble clef, 4/4 time. The notes are: Re (D4), Fa (F4), La (G3). The notes are written on a single staff with a treble clef and a key signature of two flats (Bb, Eb).

Simple Tune

Musical notation for the Minor Simple Tune in treble clef, 4/4 time. The notes are: i (La), V (Mi), i (La), V (Mi). The notes are written on a single staff with a treble clef and a key signature of two flats (Bb, Eb).

DORIAN

Tonal Sequence

La Ti La So Fa Mi Do Re

Resting Tone

Re

Essential Harmonic Functions

i (Tonic)

Re Fa La

VII (Subtonic)

Do Mi So

IV (Subdominant)

Re So Ti

Simple Tune

i VII i VII i

MIXOLYDIAN

Tonal Sequence

Re Me Re Do Ti La Fa So

Resting Tone

So

Essential Harmonic Functions

I (Tonic)

So Ti Re

VII (Subtonic)

Fa La Do

IV (Subdominant)

So Do Mi

Simple Tune

I VII I VII I

PHRYGIAN

Tonal Sequence

Musical notation for the Phrygian Tonal Sequence in G-flat major (one flat). The notes are: Ti (G-flat), Do (A-flat), Ti (G-flat), La (F), So (E-flat), Fa (D-flat), Re (C), Mi (B-flat).

Resting Tone

Musical notation for the Phrygian Resting Tone, which is Mi (B-flat).

Essential Harmonic Functions

Musical notation for the four essential harmonic functions of the Phrygian mode in G-flat major:

- i (Tonic): Mi So Ti
- II (Supertonic): FaLaDo
- vii (Subtonic): Re Fa La
- iv (Subdominant): Mi La Do

Simple Tune

Musical notation for the Phrygian Simple Tune in G-flat major, 4/4 time. The notes are: i (G-flat), ii (A-flat), iii (B-flat), iv (C), v (D-flat), vi (E-flat), vii (F), viii (G-flat), i (A-flat), ii (B-flat), iii (C), iv (D-flat), v (E-flat), vi (F), vii (G-flat), viii (A-flat), i (B-flat).

LYDIAN

Tonal Sequence

Musical notation for the Lydian Tonal Sequence in G major (one sharp). The notes are: Do (G), Re (A), Do (G), Ti (F-sharp), La (E), So (D), Mi (C-sharp), Fa (B).

Resting Tone

Musical notation for the Lydian Resting Tone, which is Fa (B).

Essential Harmonic Functions

Musical notation for the three essential harmonic functions of the Lydian mode in G major:

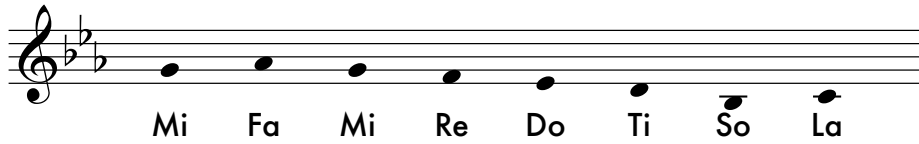
- I (Tonic): Fa La Do
- II (Supertonic): So Ti Re
- V (Dominant): Do So Mi

Simple Tune

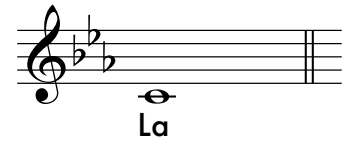
Musical notation for the Lydian Simple Tune in G major, 4/4 time. The notes are: I (G), II (A), III (B), IV (C), V (D), VI (E), VII (F-sharp), VIII (G), I (A), II (B), III (C), IV (D), V (E), VI (F-sharp), VII (G), VIII (A), I (B).

AEOLIAN

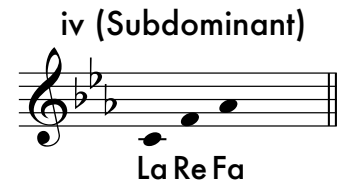
Tonal Sequence



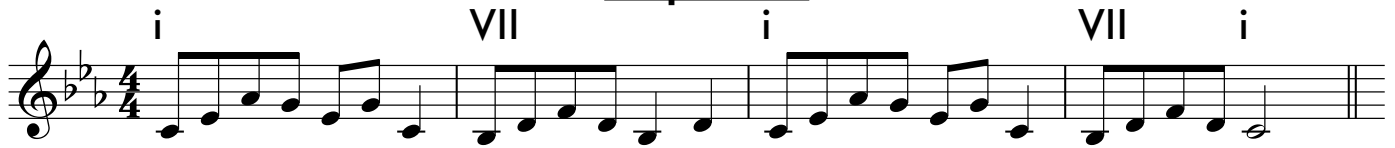
Resting Tone



Essential Harmonic Functions

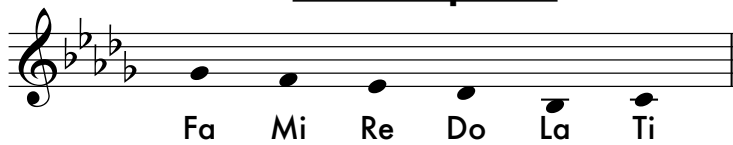


Simple Tune

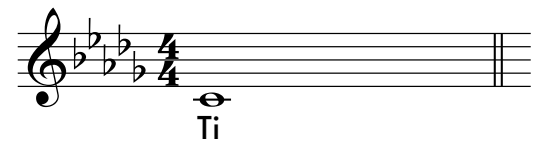


LOCRIAN

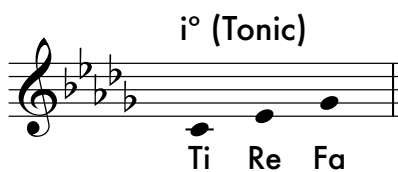
Tonal Sequence



Resting Tone



Essential Harmonic Functions



Simple Tune

